



**REGIONAL SPECIALISED METEOROLOGICAL CENTRE-TROPICAL CYCLONES, NEW DELHI**  
**TROPICAL WEATHER OUTLOOK**

**DEMS-RSMC TROPICALCYCLONES NEW DELHI DATED 07.09.2022**

**TROPICAL WEATHER OUTLOOK FOR NORTH INDIAN OCEAN (THE BAY OF BENGAL AND ARABIAN SEA) VALID FOR NEXT 120 HOURS ISSUED AT 0600 UTC OF 07.09.2022 BASED ON 0300 UTC OF 07.09.2022.**

**BAY OF BENGAL:**

A CYCLONIC CIRCULATION HAS FORMED OVER EASTCENTRAL BAY OF BENGAL AT 0300 UTC OF TODAY, THE 07TH SEPTEMBER, 2022. UNDER ITS INFLUENCE, A LOW PRESSURE IS LIKELY TO FORM OVER WESTCENTRAL BAY OF BENGAL DURING NEXT 24 HOURS.

SCATTERED TO BROKEN LOW AND MEDIUM CLOUDS WITH EMBEDDED INTENSE TO VERY INTENSE CONVECTION OVER CENTRAL & SOUTH BAY OF BENGAL AND MODERATE TO INTENSE CONVECTION OVER NORTH BAY OF BENGAL, ANDAMAN SEA AND TENASSERIM COAST.

**PROBABILITY OF CYCLOGENESIS (FORMATION OF DEPRESSION) DURING NEXT 120 HRS:**

24 HOURS	24-48 HOURS	48-72 HOURS	72-96 HOURS	96-120 HOURS
NIL	NIL	LOW	LOW	NIL

**ARABIAN SEA:**

SCATTERED TO BROKEN LOW AND MEDIUM CLOUDS MODERATE TO INTENSE CONVECTION OVER SOUTHEAST & EASTCENTRAL ARABIAN SEA AND LAKSHADWEEP ISLANDS.

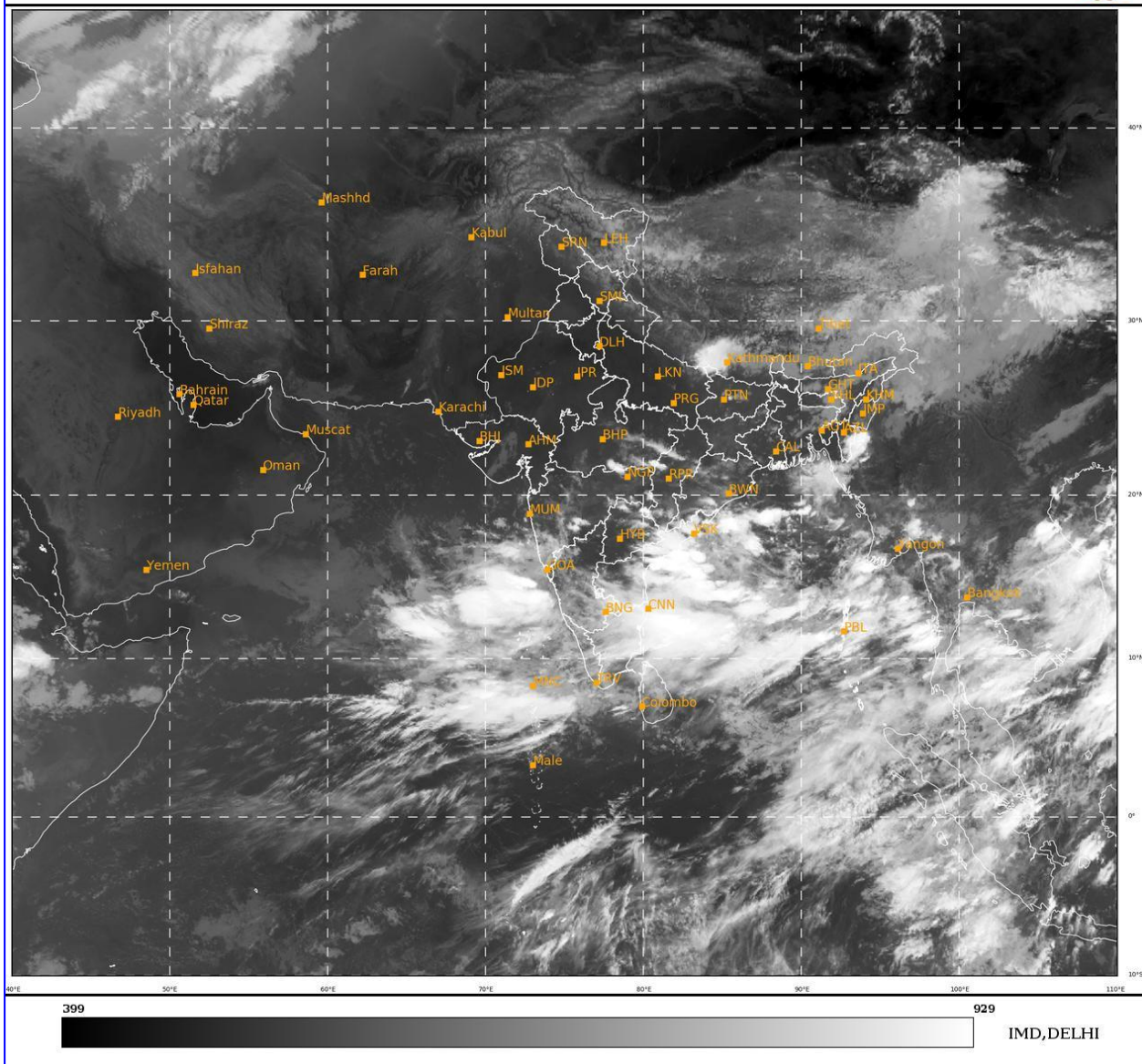
**PROBABILITY OF CYCLOGENESIS (FORMATION OF DEPRESSION) DURING NEXT 120 HRS:**

24 HOURS	24-48 HOURS	48-72 HOURS	72-96 HOURS	96-120 HOURS
NIL	NIL	NIL	NIL	NIL

**Remarks:** Nil

SAT : INSAT-3D IMG  
 IMG\_TIR1 10.8 um  
 L1C Mercator

07-09-2022/(0300 to 0327) GMT  
 07-09-2022/(0830 to 0857) IST



Cloud distribution: (a) Isolated: <25%, Scattered:25-50%, Broken: 51-75%, Solid:>75%, Convection Intensity: (a) Weak: Cloud Top Temperature (CTT) >-25°C, (b) Moderate: CTT: - 25°C to -40°C, (c) Intense: CTT: - 41°C to -70°C and (d) Very Intense: : Less than -70°C  
 PROBABILITY OF CYCLOGENESIS (FORMATION OF DEPRESSION):NIL: 0%, LOW: 1-33%, , MODERATE: 34-66% AND HIGH: 67-100%  
 This is a guidance Bulletin for WMO/ESCAP Panel Member countries. Visit respective National websites for Country specific Bulletins